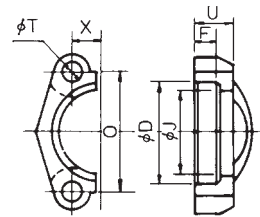


ACCESSORIES

SAE SPLIT FLANGE

PART.NO	D	F	J	O	T	U	X	weight
SF-3008	31.0	6.09~6.35	24.3	38.1	8.7	12.7	8.7	55
SF-3012	38.9	6.09~6.35	32.1	47.6	10.3	14.2	11.1	80
SF-3016	45.2	7.36~7.62	38.5	52.4	10.3	15.7	13.1	110
SF-3020	51.6	7.36~7.62	43.7	58.7	11.9	14.2	15.1	135
SF-3024	61.1	7.41~7.67	50.8	69.9	13.5	15.7	17.9	215
SF-3032	72.2	8.89~9.15	62.7	77.8	13.5	15.7	21.4	250

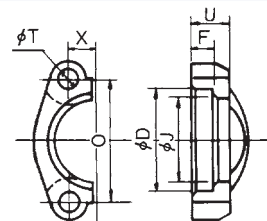
PART NO. SF3000



SAE SPLIT FLANGE CLAMPS
3000PSI CODE61-SAE J518

PART.NO	D	F	J	O	T	U	X	weight
SF-6008	32.5	6.97~7.23	24.6	40.4	8.4	16.0	9.1	60
SF-6012	42.1	8.13~8.39	32.5	50.8	10.3	19.0	11.9	150
SF-6016	48.4	8.89~9.15	38.9	57.2	11.9	23.9	13.9	250
SF-6020	54.8	9.65~9.91	44.5	66.7	13.5	26.9	15.9	400
SF-6024	64.3	11.94~12.20	51.6	79.4	16.7	30.2	18.3	590
SF-6032	80.2	11.94~12.20	67.6	96.8	19.8	36.6	22.2	1,100

PART NO. SF6000



SAE SPLIT FLANGE CLAMPS
6000PSI CODE62-SAE J518

ACCESSORIES O'RING

Size	SAE 3000PSI-6000PSI O'RING		
	inch	O'RING	
		JIS	SAE
15	1/2	W1516 AN6227-15	MIL-P-25732-210
20	3/4	W1516 AN6227-19	MIL-P-25732-214
25	1	W1516 AN6227-24	MIL-P-25732-219
32	1 1/4	W1516 AN6227-27	MIL-P-25732-222
40	1 1/2	W1517 AN6230-3	MIL-P-25732-225
50	2	W1517 AN6230-6	MIL-P-25732-228

The hardness of O'RING recommend JIS90°

BOLT·NATT FOR FLANGE

Size	SAE 3000 PSI		SAE 6000 PSI	
	inch	BOLT	inch	BOLT
15	1/2	5/16 -18UNC2A	1/2	5/16 -18UNC2A
20	3/4	3/8 -16UNC2A	3/4	3/8 -16UNC2A
25	1	3/8 -16UNC2A	1	7/16 -14UNC2A
32	1 1/4	7/16 -14UNC2A	1 1/4	1/2 -13UNC2A
40	1 1/2	1/2 -13UNC2A	1 1/2	5/8 -11UNC2A
50	2	1/2 -13UNC2A	2	3/4 -10UNC2A